

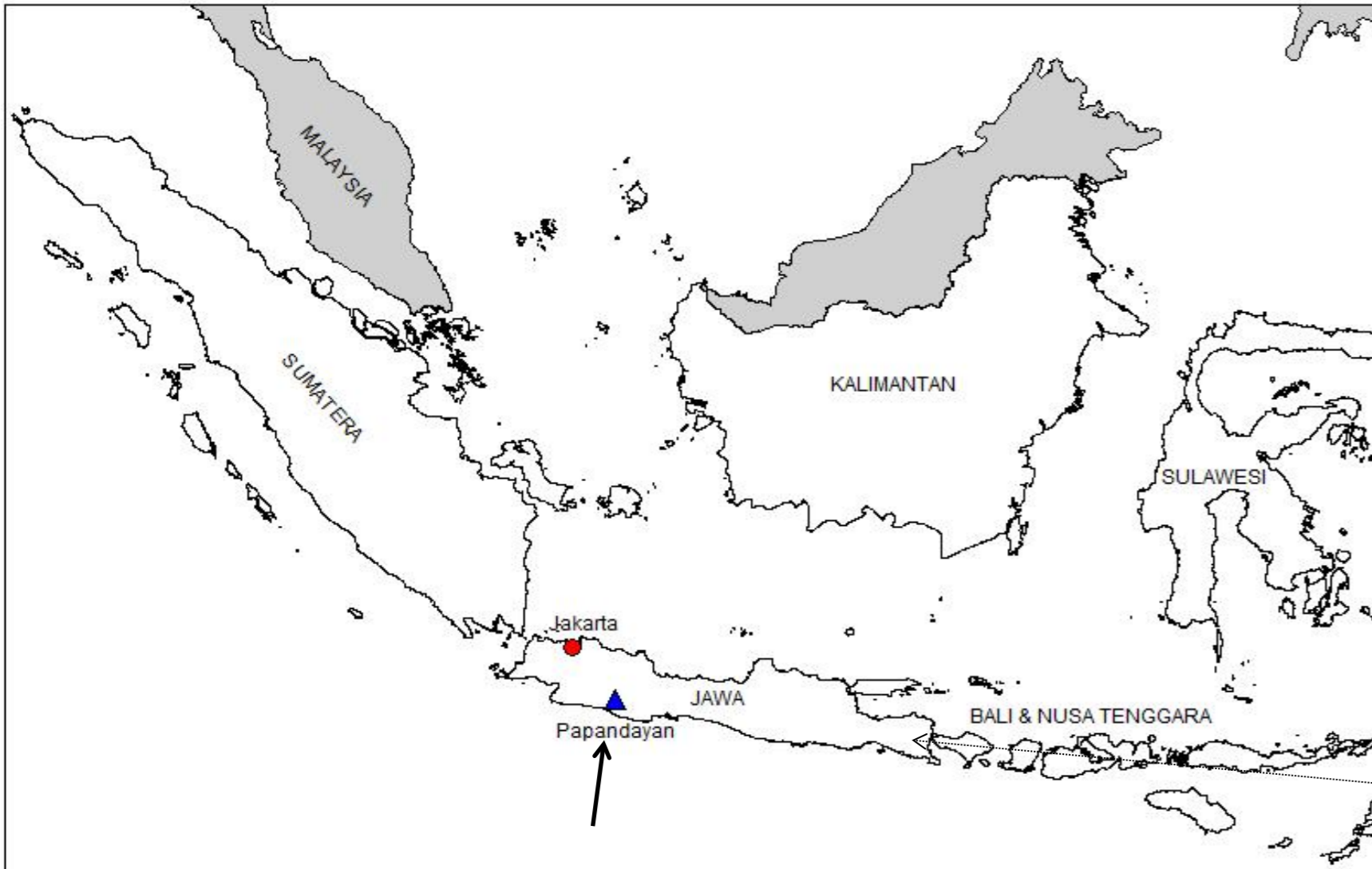
Surveillance sismique des Volcans Seismische monitoring van Vulkanen



Volcans étudiés – Bestudeerde vulkanen (Indonésie – Indonesie)

Papandayan: West Java, Indonesia (160 km of Jakarta)

Kawah Ijen: East Java, Indonesia



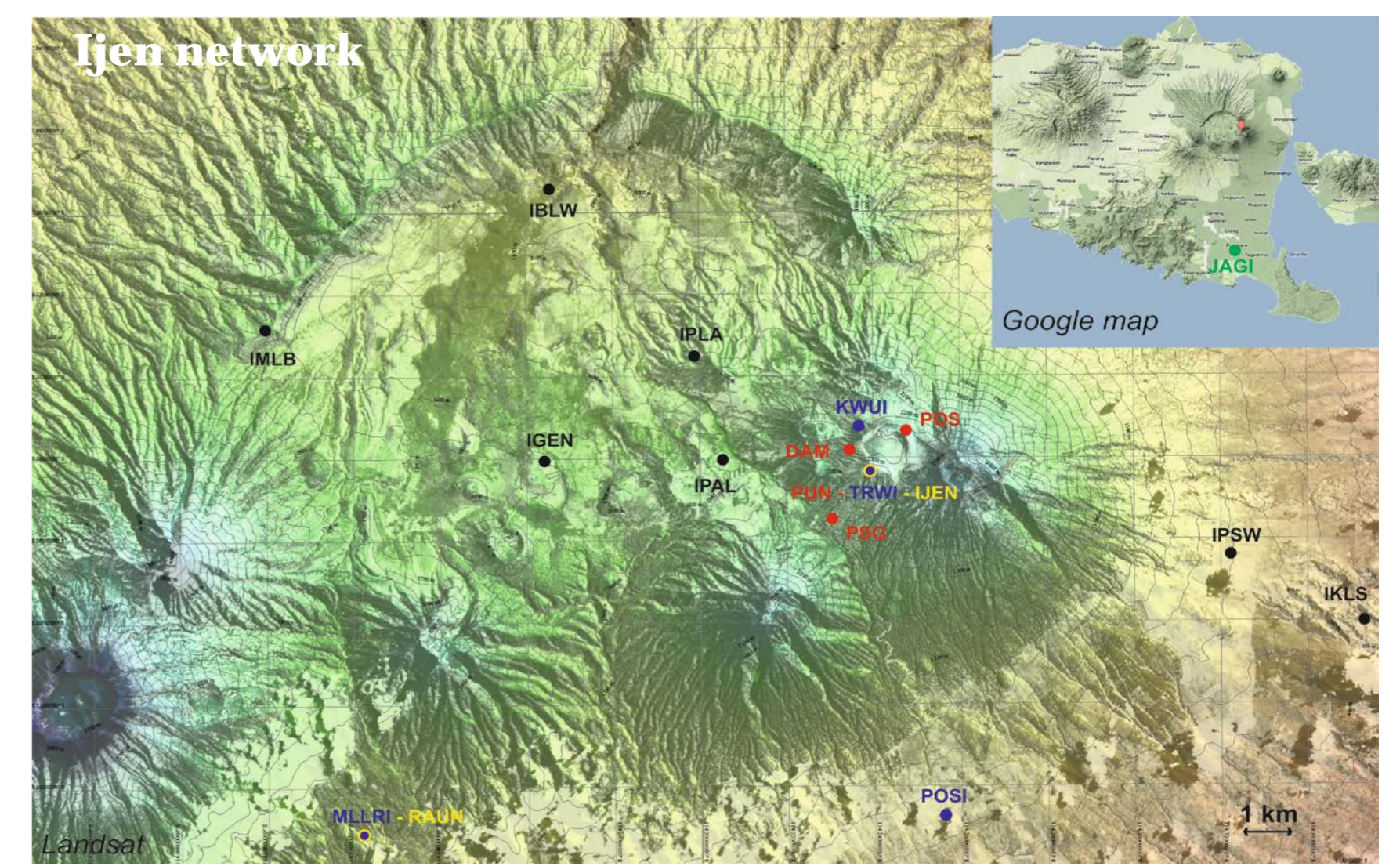
Instruments – instrumenten:

- 1 large-bande – broadband seismometer
- 1 station météo – meteorologische station

Instruments – instrumenten:

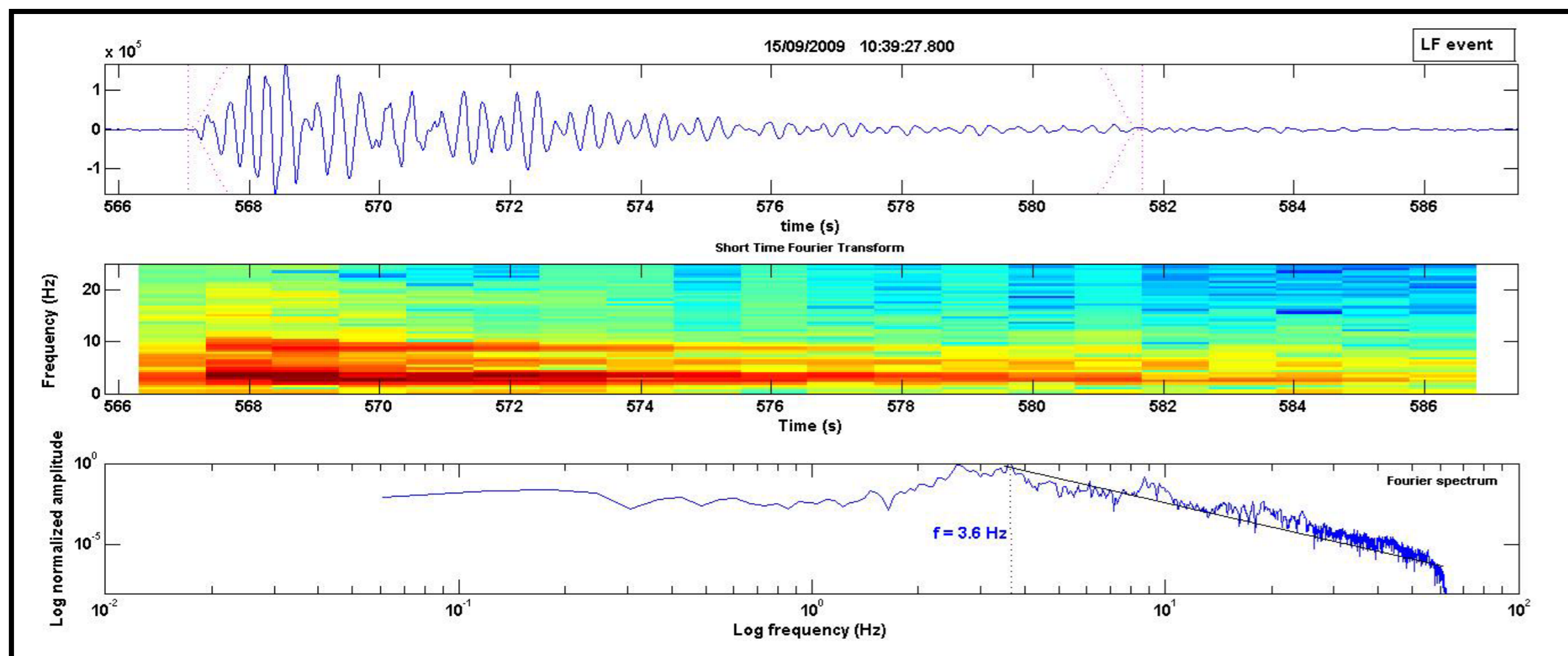
- 3 large-bande – broadband seismometer
- 1 station météo – meteorologische station
- Plusieurs sondes de température/pression dans le lac acide -
Meerdere temperatuurs en waterniveau sensoren in het zure meer

Développement du réseau sismique – Ontwikkeling van het seismisch netwerk

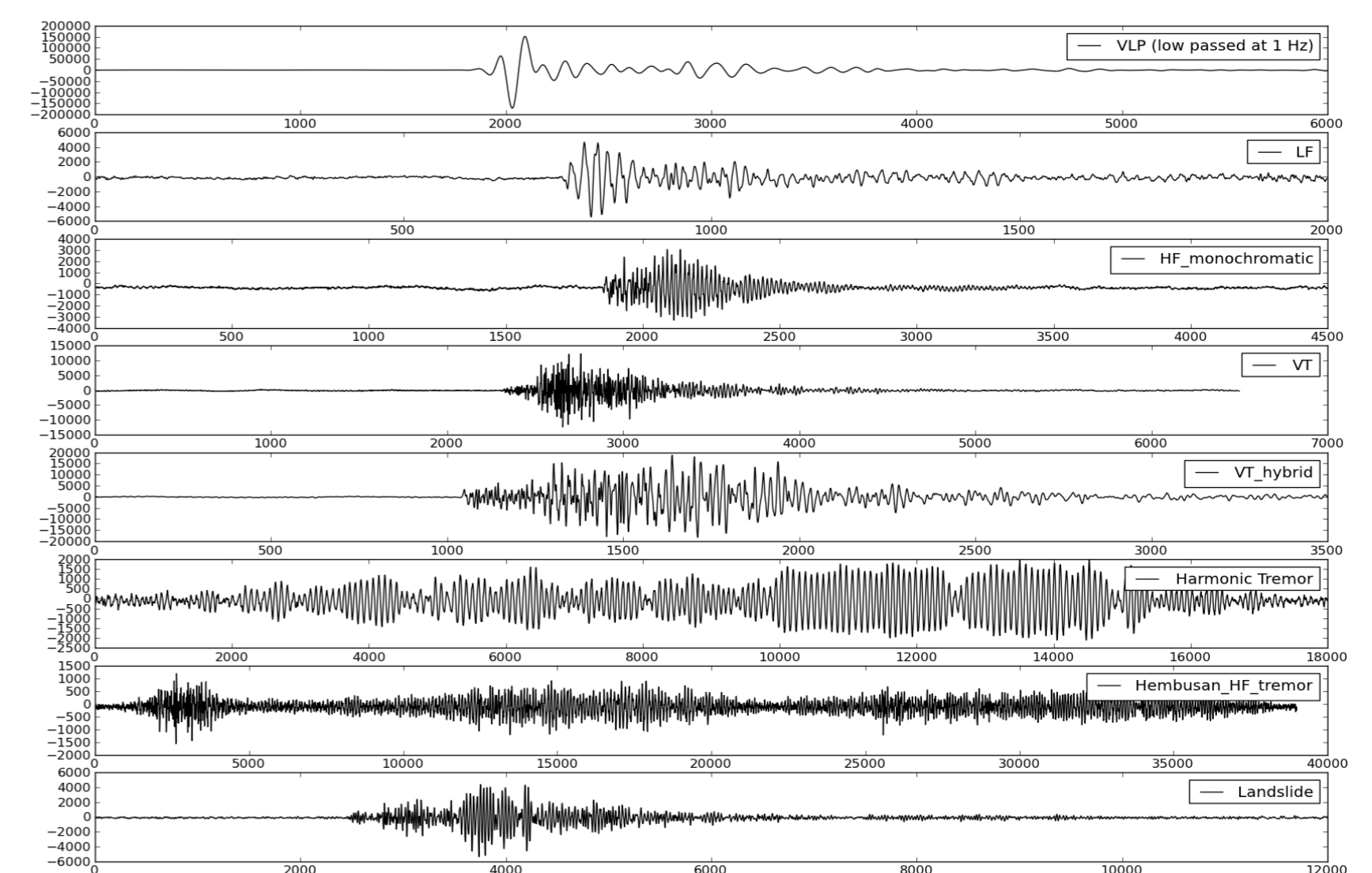


Seismische signalen – signaux sismiques

Papandayan



Kawah Ijen

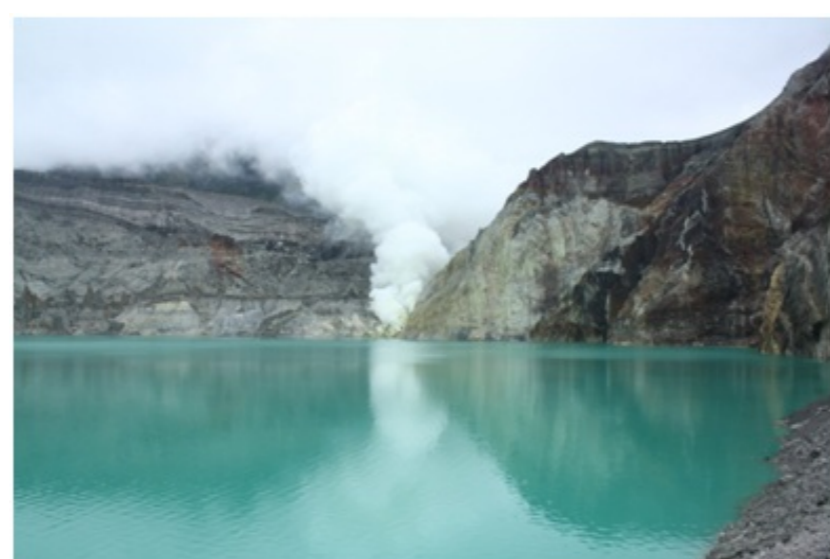


Eruption - uitbarsting



Activité - Activiteiten

Changements de couleurs - Kleurveranderingen



Kawah Ijen

Dégazage - ontgassen

